

PLAN LEGEND

- EXTERNAL WALLS
- INTERIOR PARTITIONS
- PRE-FAB. CHILLER UNIT
- EGRESS TRAVEL PATH

AREA MATRIX

FOH - 105 SQM
BOH - 91.9 SQM

CUSTOMER WC - 2.3 SQM
STAFF WC - 1.8 SQM
COLD ROOMS - 16.4 SQM
DRY STORAGE - 12.2 SQM

SYMBOLS LEGEND

- GRID TAG/LINE
- WINDOW TAG
- DOOR TAG - REFER TO A6.4
- ARTWORK/SIGNAGE TAG
- CODED NOTE
- REVISION CLOUD
- REVISION SYMBOL
- NORTH ARROW
- DETAIL REFERENCE SHEET NUMBER
- DETAIL REFERENCE SHEET NUMBER
- BUILDING SECTION REFERENCE SHEET NUMBER
- ELEVATION REFERENCE SHEET NUMBER
- ELEVATION NUMBER & DIRECTION SHEET NUMBER

EXIT TRAVEL DISTANCE

IN ACCORDANCE WITH THE GUIDANCE GIVEN IN BS 9999:

- UP TO 50 PERSONS - AT LEAST 1 ESCAPE ROUTE;
- MAX 24M FOR SINGLE DIRECTION
- FOR ALL AREAS WHERE UNASSISTED DISABLED EGRESS IS REQUIRED, DOORS SHOULD HAVE AN ABSOLUTE MINIMUM CLEAR WIDTH OF 850MM

EXPECTED OCCUPANCY

DINING - 42 (SEATED)
STANDINGS - 10
STAFF INCL. KITCHEN - 10-15

OVERALL - 67

WC PROVISION

- WITH STAFF OCCUPANCY (6-15 PEOPLE) PROVISION HAS BEEN MADE FOR 2 UNISEX WCS. EACH WC WILL BE SELF CONTAINED AND INCLUDE ITS OWN WHB, SOAP AND HAND DRYING FACILITIES.
- FOR THE TOTAL CUSTOMER OCCUPANCY OF 69 PROVISION HAS BEEN MADE FOR 3 UNISEX WCS, ONE OF WHICH IS ACCESSIBLE IN LINE WITH BS 6465-1:2006 CLAUSE 7.2. EACH WC WILL BE SELF CONTAINED AND INCLUDE ITS OWN WHB, SOAP AND HAND DRYING FACILITIES.
- THE ACCESSIBLE WC FACILITIES WILL BE PROVIDED IN ACCORDANCE WITH THE DIMENSIONS, ARRANGEMENT OF FITTINGS WITHIN APPROVED DOCUMENT M AND DIAGRAMS 18,19 AND 20.

BUILDING REGS. NOTES

FIRE LIFE SAFETY DESIGN TO CONFIRM TO, BUT NOT LIMITED TO THE FOLLOWING STANDARDS;

- THE BUILDING REGULATIONS, FIRE SAFETY, APPROVED DOCUMENT B, FOR BUILDINGS OTHER THAN DWELLINGHOUSES.
- BS 9999- CODE OF PRACTICE FOR FIRE SAFETY IN THE DESIGN, MANAGEMENT AND USE OF BUILDINGS
- FIRE SAFETY, NOTICES AND GRAPHIC SYMBOLS SHOULD BE PROVIDED IN ACCORDANCE WITH BS 5499 PART 1:2002 GRAPHICAL SYMBOLS AND SIGNS - SAFETY SIGNS, INCLUDING FIRE SAFETY SIGNS. SPECIFICATION FOR GEOMETRIC SHAPES, COLOURS, AND LAYOUT.
- THE PREMISES SHOULD BE PROVIDED WITH A FIRE DETECTION AND FIRE ALARM SYSTEM DESIGNED AND INSTALLED IN ACCORDANCE WITH BS 5839-1:2017 CODE OF PRACTICE FOR SYSTEM DESIGN, INSTALLATION, COMMISSIONING, AND MAINTENANCE. ANY EXISTING SYSTEM FOR THE BUILDING SHOULD BE MAINTAINED/ALTERED TO SUIT THE NEW INTERNAL LAYOUT.
- ANY ELECTRONICALLY POWERED LOCKS SHOULD BE DESIGNED TO FAIL SAFE ON OPERATION OF THE FIRE ALARM, ON LOSS OF POWER OR SYSTEM ERROR AND ON ACTIVATION OF A MANUAL DOOR RELEASE UNIT TO BS EN 54-11:2001.
- THE EMERGENCY LIGHTING SHOULD BE PROVIDED, DESIGNED, AND INSTALLED IN ACCORDANCE WITH BS 5266-1:2016 CODE OF PRACTICE FOR THE EMERGENCY LIGHTING OF PREMISES. ANY EXISTING SYSTEM FOR THE BUILDING SHOULD BE MAINTAINED/ALTERED TO SUIT THE NEW INTERNAL LAYOUT.
- TRAVEL DISTANCES HAVE BEEN ASSESSED IN ACCORDANCE WITH APPROVED DOCUMENT B. THE UNIT OFFERS EGRESS IN MORE THAN ONE DIRECTION, WITH ESCAPE ROUTES UNDER 45m.
- DOORS ON ESCAPE ROUTES WILL BE FITTED WITH ACCESSIBLE EMERGENCY FASTENINGS TO FACILITATE ESCAPE. ANY DOORS REQUIRING ACCESS CONTROL WILL BE FITTED WITH SUITABLE EMERGENCY RELEASE SYSTEMS TO PROVIDE EGRESS IN THE EVENT OF EMERGENCY.
- ANY NEW DUCTS PASSING THROUGH FIRE RATED CONSTRUCTIONS ARE TO BE FITTED WITH FIRE COLLARS OR SIMILAR TO PREVENT THE SPREAD OF FIRE.

GENERAL NOTES

THIS DRAWING IS INDICATIVE ONLY PENDING VERIFICATION OF THE ACTUAL STRUCTURE FOLLOWING DEMOLITION OF THE INTERIORS, BUILDING REGULATIONS APPROVAL AND CLIENT APPROVAL.

DO NOT SCALE FROM DRAWINGS. ALL DISCREPANCIES TO BE REPORTED TO GENSLER ARCHITECT IMMEDIATELY.

ALL DIMENSIONS TO BE VERIFIED BY CONTRACTOR ON SITE PRIOR TO ANY WORKS

G.C. RESPONSIBLE TO PERFORM THEIR OWN SITE VERIFICATION OF EXISTING CONDITIONS PRIOR TO SUBMITTING TENDER PACKAGE.

ALWAYS REFER TO GENERAL NOTES ON COVER SHEET DRAWING G1.1

CODED NOTES

- ROOF OVERHANGING ABOVE. REFER TO ROOF PLAN, SECTIONS AND EXTERIOR ELEVATIONS FOR ADDITIONAL INFORMATION.
- AWNING / CANOPY ABOVE
- PRE-FINISHED DOWNSPOUT. EXTEND 150MM PVC W/ CAP UNDERGROUND & CONNECT TO STORM. SEE CIVIL AND EXTERIOR ELEVATIONS FOR ADDITIONAL INFORMATION.
- 150MM C.M.U. CURB BELOW STOREFRONT. REFER TO SECTION AND STRUCTURAL DRAWINGS.
- EDGE OF CONCRETE SLAB / FOUNDATION FOR WALK-IN BOX. REF. STRUCTURAL DRAWINGS.
- GUARDRAIL
- HARRI TABLET LOCATION REQ. POWER OUTLET
- WATER HEATER
- LANDSCAPE ORIENTED MENU BOARDS OVER KIOSKS
- PRE-SELL BOARDS. GC TO PROVIDE BLOCKING TO SUPPORT MOUNTING BRACKETS
- APPROXIMATE LOCATION OF FRONT COUNTER. SEE DETAILS
- EXHAUST HOOD. REF. MECHANICAL DRAWINGS
- STAINLESS STEEL CLOSURE TRIM / ANGLES BY GC.
- BOLLARD POSITION TO BE CONFIRMED AND INSTALLED AS PER CIVILS DRAWINGS
- PREFABRICATED USED COOKING OIL MANAGEMENT ENCLOSURE. TO BE SITED ON MIN. 150mm THICK CONCRETE SLAB
- FIXED ACCESS LADDER WITH SAFETY CAGE AT HIGH LEVEL
- PARTIAL HEIGHT WALL. SEE DETAILS
- G.C. TO INSTALL STAINLESS STEEL CORNER GUARDS THROUGHOUT BACK OF HOUSE AREA. REFER TO EQUIPMENT PLAN SHEET FOR LOCATION AND TYPE OF CORNER GUARD.
- WALK-IN FREEZER/COOLER MANUFACTURER TO PROVIDE REINFORCED FRAMED OPENING FOR DOOR AS SCHEDULED.
- HOLD DOWNS PROVIDED BY W/B MANUFACTURER G.C. TO DRILL AND EPOXY SET ANCHOR BOLTS AS REQUIRED. VERIFY LOCATIONS AND QUANTITY WITH MANUFACTURER
- RAMP BY COOLER BOX PROVIDER.
- PROVIDE IN WALL BLOCKING FOR MOUNTING ARM OF CUSTOMER ORDER PICKUP SCREEN. COORDINATE WITH MOUNTING ARM SPECIFICATION. BOTTOM OF SCREEN TO ALIGN WITH COLLECTION COUNTER OPENING
- WALK-IN-BOX FREEZER SUPPLIED WITH INSULATED FLOOR
- LOCATION OF CO2 TANKS
- LOCATION OF BIB RACK
- PROVISION FOR ADVERTISEMENT DISPLAY UNIT
- LOCATION OF FIRE EXTINGUISHER AND LAST MAN SWITCH
- EXTERNAL REFUSE STORE FENCING TO BE KW-2

LIFE SAFETY DESIGN

FIRE LIFE SAFETY DESIGN TO CONFIRM TO, BUT NOT LIMITED TO THE FOLLOWING STANDARDS;

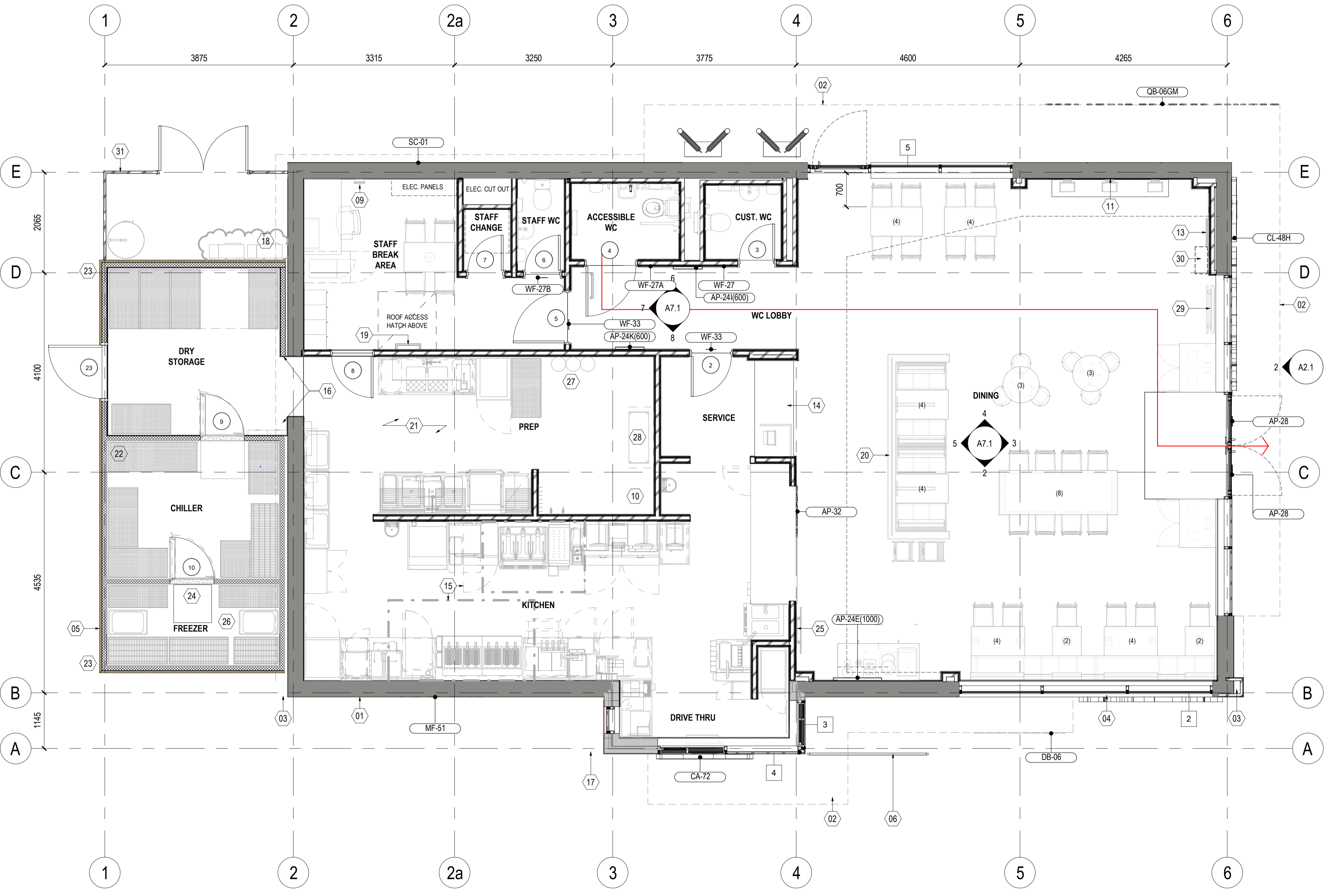
- THE BUILDING REGULATIONS, FIRE SAFETY, APPROVED DOCUMENT B, FOR BUILDINGS OTHER THAN DWELLINGHOUSES.
- BS 9999- CODE OF PRACTICE FOR FIRE SAFETY IN THE DESIGN, MANAGEMENT AND USE OF BUILDINGS
- FIRE SAFETY, NOTICES AND GRAPHIC SYMBOLS SHOULD BE PROVIDED IN ACCORDANCE WITH BS 5499 PART 1:2002 GRAPHICAL SYMBOLS AND SIGNS - SAFETY SIGNS, INCLUDING FIRE SAFETY SIGNS. SPECIFICATION FOR GEOMETRIC SHAPES, COLOURS, AND LAYOUT.
- THE PREMISES SHOULD BE PROVIDED WITH A FIRE DETECTION AND FIRE ALARM SYSTEM DESIGNED AND INSTALLED IN ACCORDANCE WITH BS 5839-1:2017 CODE OF PRACTICE FOR SYSTEM DESIGN, INSTALLATION, COMMISSIONING, AND MAINTENANCE. ANY EXISTING SYSTEM FOR THE BUILDING SHOULD BE MAINTAINED/ALTERED TO SUIT THE NEW INTERNAL LAYOUT.
- ANY ELECTRONICALLY POWERED LOCKS SHOULD BE DESIGNED TO FAIL SAFE ON OPERATION OF THE FIRE ALARM, ON LOSS OF POWER OR SYSTEM ERROR AND ON ACTIVATION OF A MANUAL DOOR RELEASE UNIT TO BS EN 54-11:2001.
- THE EMERGENCY LIGHTING SHOULD BE PROVIDED, DESIGNED, AND INSTALLED IN ACCORDANCE WITH BS 5266-1:2016 CODE OF PRACTICE FOR THE EMERGENCY LIGHTING OF PREMISES. ANY EXISTING SYSTEM FOR THE BUILDING SHOULD BE MAINTAINED/ALTERED TO SUIT THE NEW INTERNAL LAYOUT.

FLOOR PLAN SHEET NOTES

- EXTERIOR DIMENSIONS ARE FROM FACE OF SHEATHING TO FACE OF SHEATHING UNLESS NOTED OTHERWISE. INTERIOR DIMENSIONS ARE TO FACE OF PARTITION UNLESS NOTED OTHERWISE.
- COORDINATE CURB CUTS AT DOORS WITH STOREFRONT MANUFACTURER PRODUCT DETAILS AND SHOP DRAWINGS.
- REFER TO FINISH PLAN AND INTERIOR ELEVATIONS FOR EXTENT OF INTERIOR FINISHES.
- THE CONTRACTOR TO PROVIDE PATTERESSING TO WALL MOUNTED ITEMS EQUIPMENT, MILLWORK, ETC. WEIGHTS REQUIREMENTS TO BE COORDINATED WITH EQUIPMENT SUPPLIERS ETC. COORDINATE LOCATIONS WITH OWNER'S REPRESENTATIVE AS NECESSARY.
- REFER TO WALL TYPES ON SHEET A4.3.
- REFER TO DOOR AND WINDOW SCHEDULE ON SHEET A6.3.
- EQUIPMENT CURB BY KITCHEN EQUIPMENT DISTRIBUTOR, REFERENCE DETAIL 7/A5.2 FOR EQUIPMENT CURB DETAILS

SIGNAGE SCHEDULE

TYPE CODE	NO.	DESCRIPTION
AP-24E(1000)	1	Frosty_In_Space (600mm)
AP-24I(600)	1	Fry Heat (600mm)
AP-24K(600)	1	Fit for a Fry (600mm)
AP-28	2	EXTERNAL BUILDING SIGN - 24" CAMEO SIGN
AP-32	1	INTERNALLY ILLUMINATED LETTERS - PICK UP
CA-72	1	EXTERNAL BUILDING SIGN - 72" CAMEO SIGN
CL-48H	1	EXTERNAL BUILDING SIGN - 48" HORIZONTAL CHANNEL LETTERS-WAVE & CAMEO
DB-06	1	EXTERNAL BUILDING SIGN - DELIVERY PICK UP (6" CANOPY SIGN)
MF-51	1	MADE FRESH TO ORDER 3D LETTERS
CB-06GM	1	EXTERNAL BUILDING SIGN - EXTERIOR CANOPY MESSAGE (6.5" QBS1969)
SC-01	1	EXTERNAL SEMI-TRANSPARENT SCREEN PRINT CAMEO
WE-48	1	EXTERNAL BUILDING SIGN - 48" HORIZONTAL CHANNEL LETTERS-WAVE
WF-27	1	INTERNAL WAYFINDING SIGN - ALL GENDER RESTROOM
WF-27A	1	INTERNAL WAYFINDING SIGN - ALL GENDER RESTROOM ACCESSIBLE
WF-27B	1	INTERNAL WAYFINDING SIGN - ALL GENDER RESTROOM BLACK
WF-33	2	INTERNAL WAYFINDING SIGN - EMPLOYEES ONLY
Grand total:		18



GENERAL ARRANGEMENT PLAN 1
1 : 50

SITE NUMBER: 13445
BASE MODEL: UK ROLLOUT FSDT
ASSET TYPE: COMPANY
CLASSIFICATION: NEW
OWNER: COMPANY
BASE VERSION: 2022
UPGRADE CLASSIFICATION: NEW BUILD
PROJECT YEAR: 2023
FURNITURE PACKAGE: XXX
DESIGN BULLETINS: SPRING 2020



GENERAL NOTES:
ALWAYS REFER TO GENERAL NOTES ON COVER SHEET DRAWING G1.1

Wendy's Store # 13445
MASKEW AVENUE, PETERBOROUGH, UK

REV. DATE	DESCRIPTION

ISSUE DATE: 13.07.2023

CURRENT REVISION

D

SHEET NAME
GENERAL ARRANGEMENT PLAN

SHEET NUMBER
A1.1

SCALE: As indicated@ A1